

### Specifications

#### Wafer

備注 (Remark)

1. 材料 (Material)

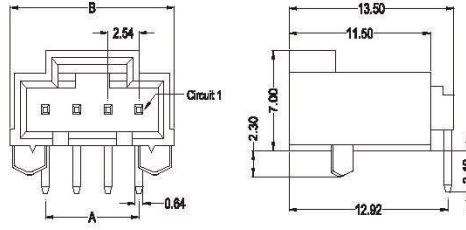
膠芯: LCP UL94V-0

Housing: LCP UL94V-0

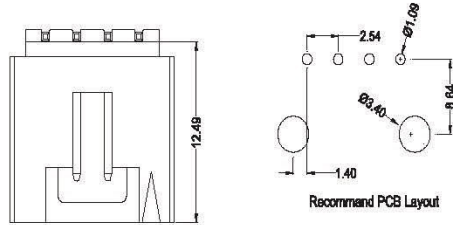
端子: 黃銅

Contact: Brass

WTB2540-PR2-XX



WTB2540-PR2-XX



Poles	Dimensions (mm)	
	A	B
2	2.54	8.53
3	5.08	11.07
4	7.62	13.61
5	10.16	16.15
6	12.70	18.69
7	15.24	21.23
8	17.78	23.77
9	20.32	26.31
10	22.86	28.85
11	25.40	31.39
12	27.94	33.93

WTB2540-PR2-XX	LCP UL 94V-0	Brass	Gold-Flash	9556H	1,000Pcs
PART NO	Material	Material(Pin)	Finish(Pin)	Mates With SWB Housing	Qty/Bag

#### Wafer

備注 (Remark)

1. 材料 (Material)

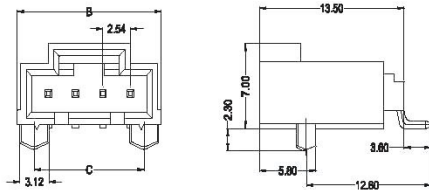
膠芯: PA66 UL94V-0

Housing: PA66 UL94V-0

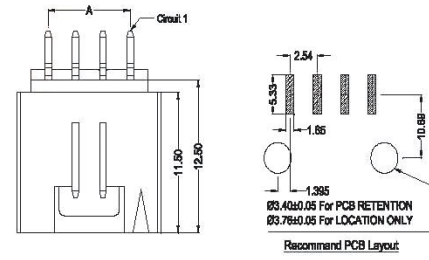
端子: 黃銅

Contact: Brass

WTB2540-PS1-XX



WTB2540-PS1-XX



Poles	Dimensions (mm)		
	A	B	C
2	2.54	8.89	5.33
3	5.08	11.43	7.87
4	7.62	13.97	10.41
5	10.16	16.51	12.95
6	12.70	19.05	15.49
7	15.24	21.59	18.03
8	17.78	24.13	20.57
9	20.32	26.67	23.11
10	22.86	29.21	25.65
11	25.40	31.75	28.19
12	27.94	34.29	30.73

WTB2540-PS1-XX	LCP UL 94V-0	Brass	Gold-Flash	9556H	250Pcs
PART NO	Material	Material(Pin)	Finish(Pin)	Mates With SWB Housing	Qty/Reel

W

WAFER

### Specifications

#### Wafer

備注 (Remark)

1. 材料 (Material)

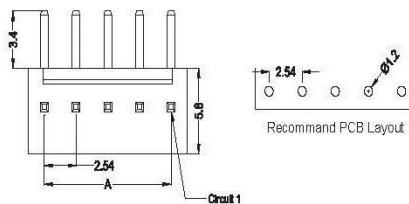
膠芯: PA66 UL94V-0/2

Housing: PA66 UL94V-0/2

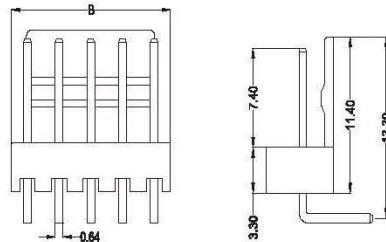
端子: 黃銅

Contact: Brass

WTB2540-PR1-XX



WTB2540-PR1-XX



Poles	Dimensions (mm)		Poles	Dimensions (mm)	
	A	B		A	B
2	2.54	5.08	12	27.94	30.48
3	5.08	7.62	13	30.48	33.02
4	7.62	10.16	14	33.02	35.56
5	10.16	12.70	15	35.56	38.10
6	12.70	15.24	16	38.10	40.64
7	15.24	17.78	17	40.64	43.18
8	17.78	20.32	18	43.18	45.72
9	20.32	22.86	19	45.72	48.26
10	22.86	25.40	20	48.26	50.80
11	25.40	27.94			

WTB2540-PR1-XX	Nylon 66 UL 94V-0	Brass	Tin-Plated	2510H	1,000Pcs
WTB2540-PR1-XX	Nylon 66 UL 94V-2	Brass	Tin-Plated		
PART NO	Material	Material(Pin)	Finish(Pin)	Mates With SWB Housing	Qty/Bag